

# JANET Roaming Service (eduroam) Wireless Configuration

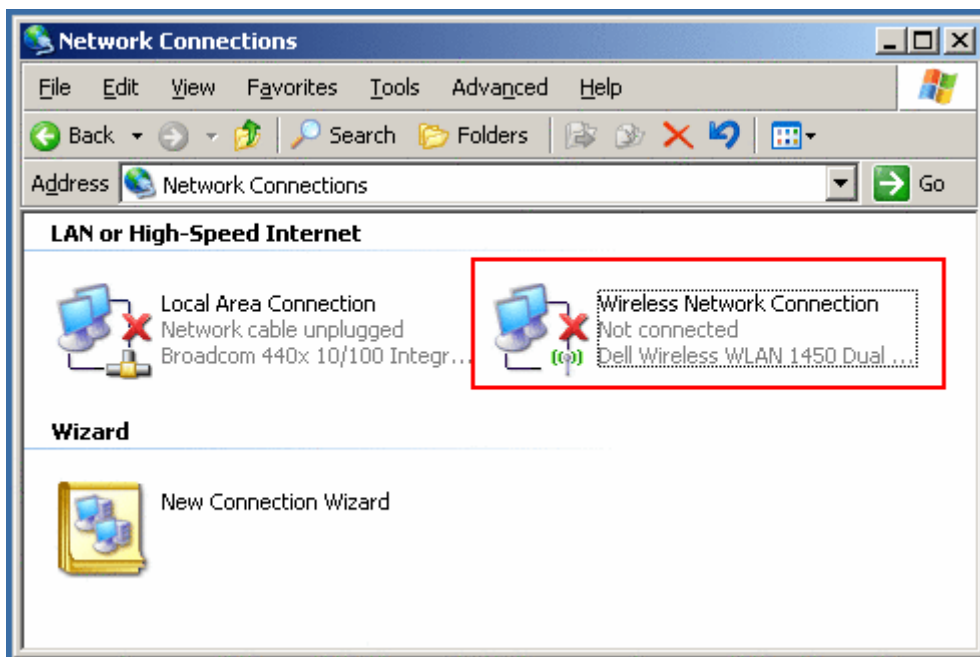
Before going into details, there are two things that should be made clear:

- Any default wireless settings will be *wrong*. If you have used wireless networking with Windows before, you will not simply be able connect to the appropriate network from **View Available Wireless Networks**. You will be much better off setting up the connection details manually by following the instructions below.
- The wireless network requires authentication; you cannot connect without a valid user name and password.

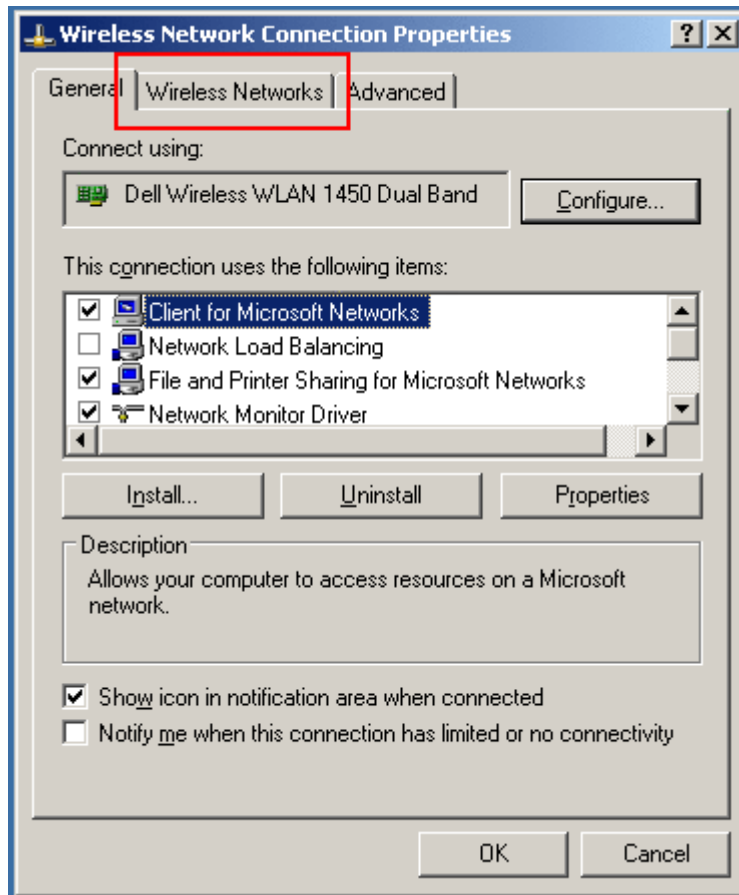
## WIRELESS NETWORK CONFIGURATION

**NOTE:** This guide assumes you are using Windows to configure your wireless network settings. If you are using another utility e.g. one supplied by your wireless card vendor, you should be able to work out the appropriate settings from this guide. However, we will only support users who use the Windows wireless configuration tools.

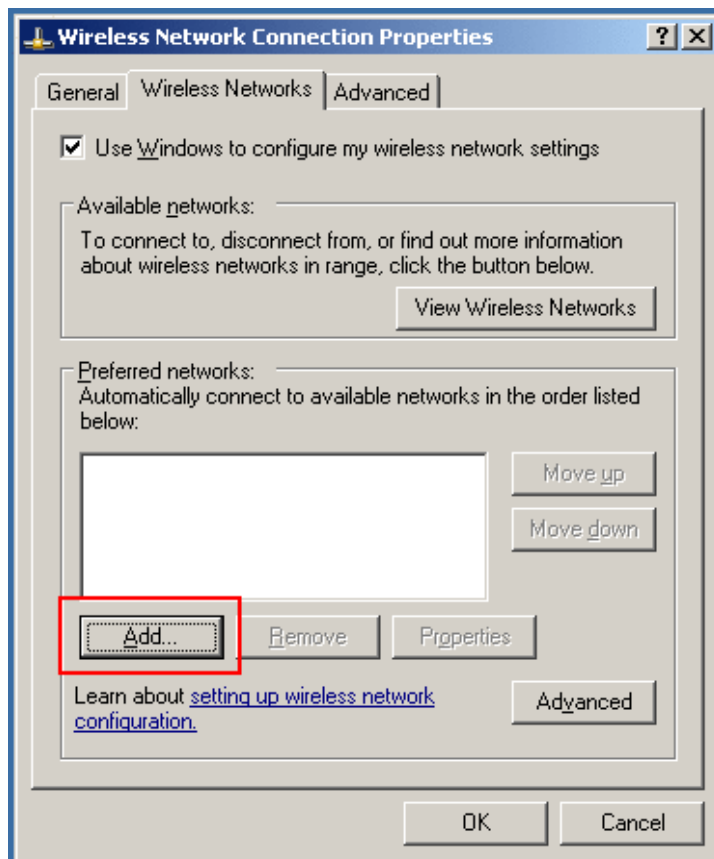
1. Go to: Start > Control Panel > Network Connections.
2. Select the icon labelled Wireless Network Connection and right click on it. Select Properties from the menu.



Click on the Wireless Networks tab.

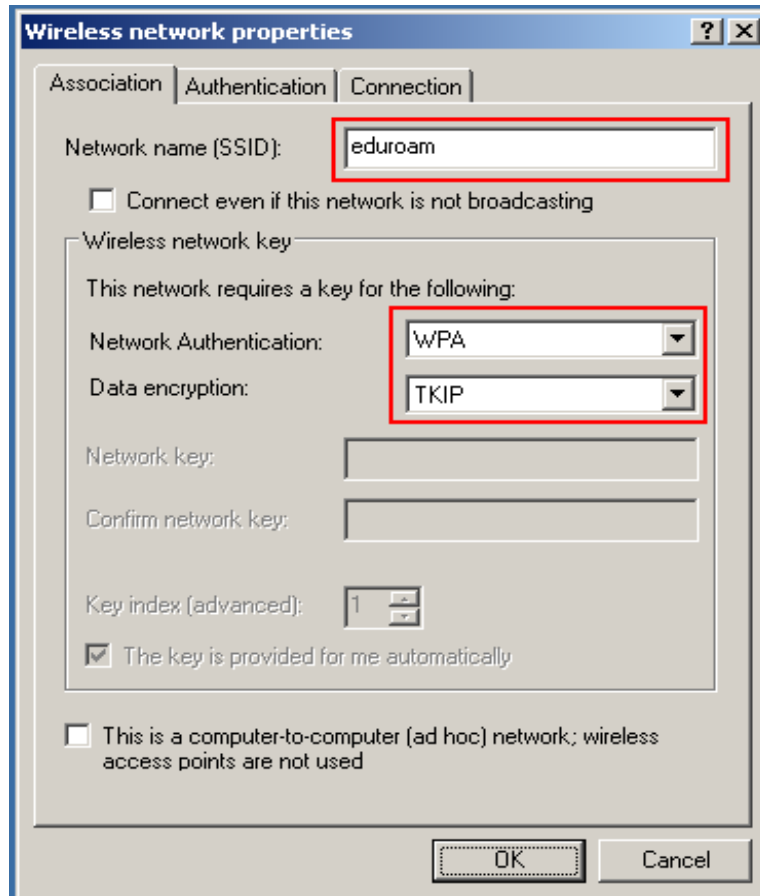


Press the Add button, which will bring up the Wireless Network Properties dialogue

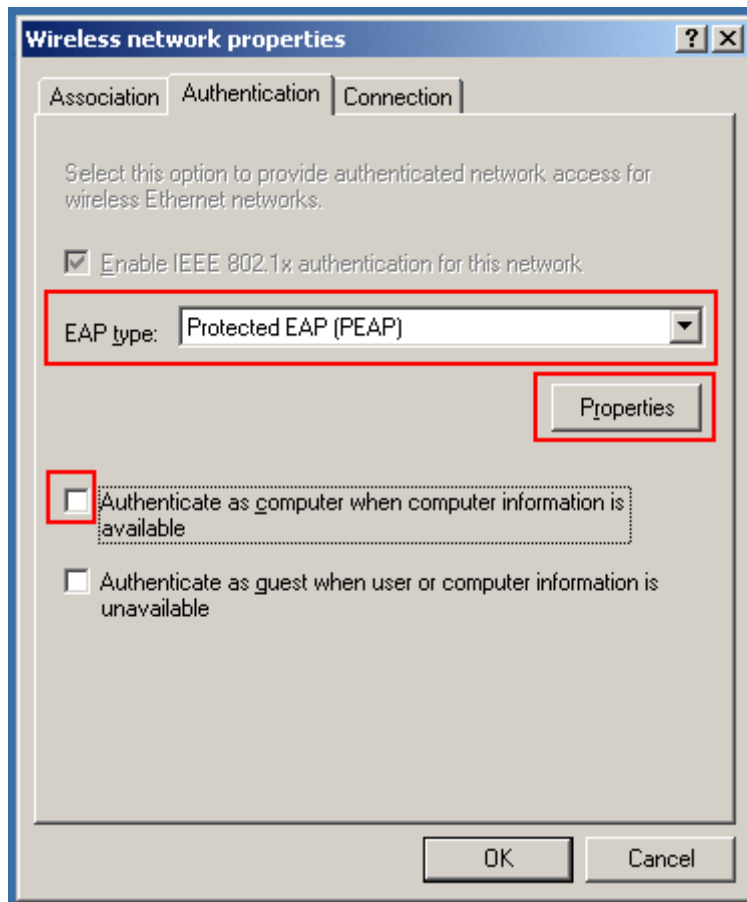


The first tab in the wireless properties dialogue is labelled **Association**. Fill in the following values:

Network name (SSID):        eduroam  
Network authentication:     WPA  
Data encryption:            TKIP

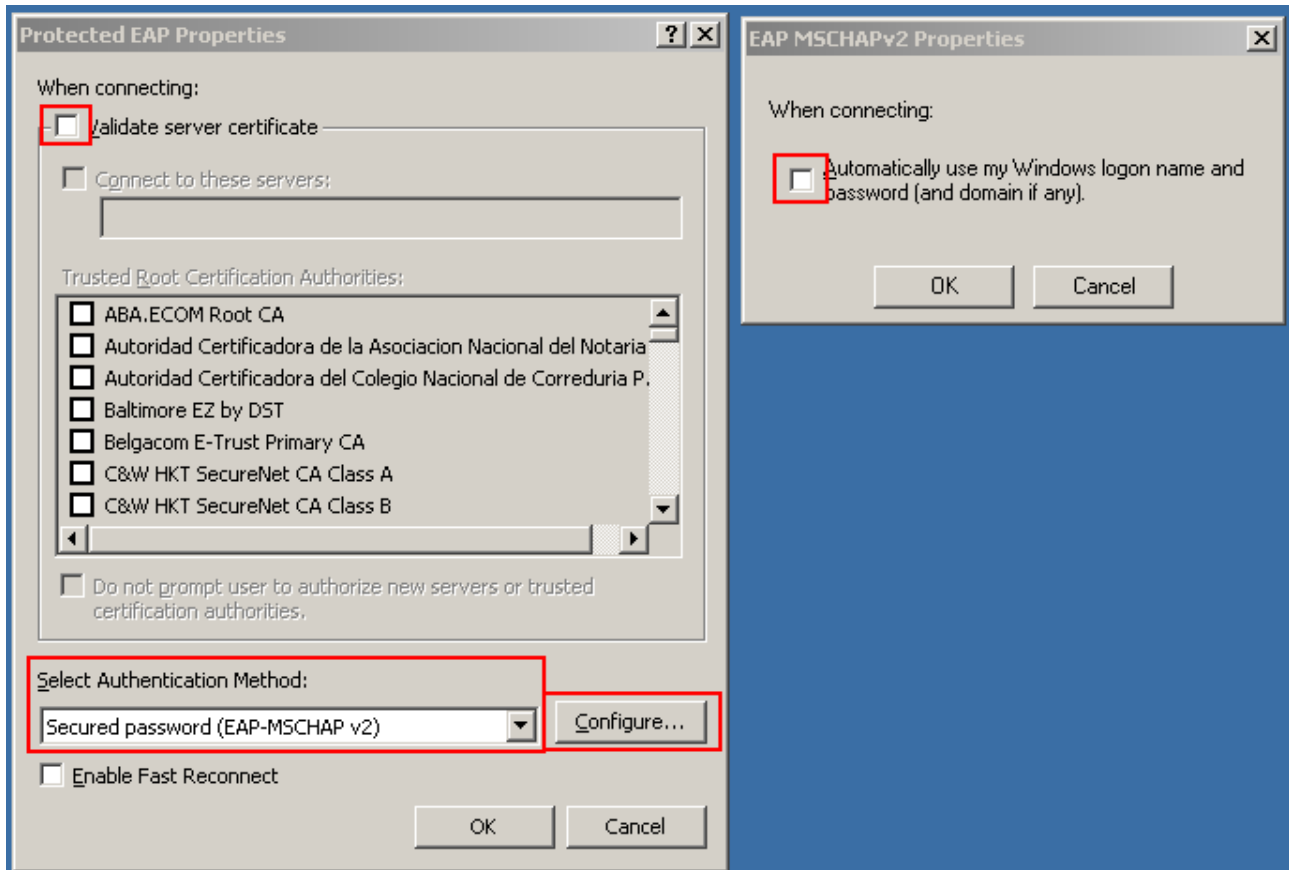


5. Now select the second tab in the wireless properties dialogue labelled **Authentication**. Select **EAP Type: Protected EAP** and untick the box labelled "Authenticate as computer when computer information is available".



Then press the button labelled **Properties**.

6. On the Protected EAP Properties dialogue, untick the box labelled Validate server certificate and press the Configure button next to Select Authentication Method. In the EAP MSCHAPv2 Properties dialogue, untick “Automatically use my Windows logon name and password (and domain if any)”.

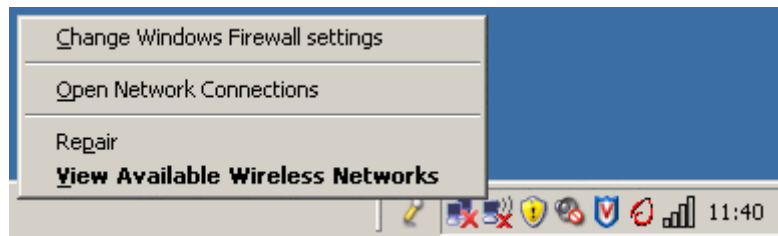


# CONNECTING TO THE WIRELESS NETWORK

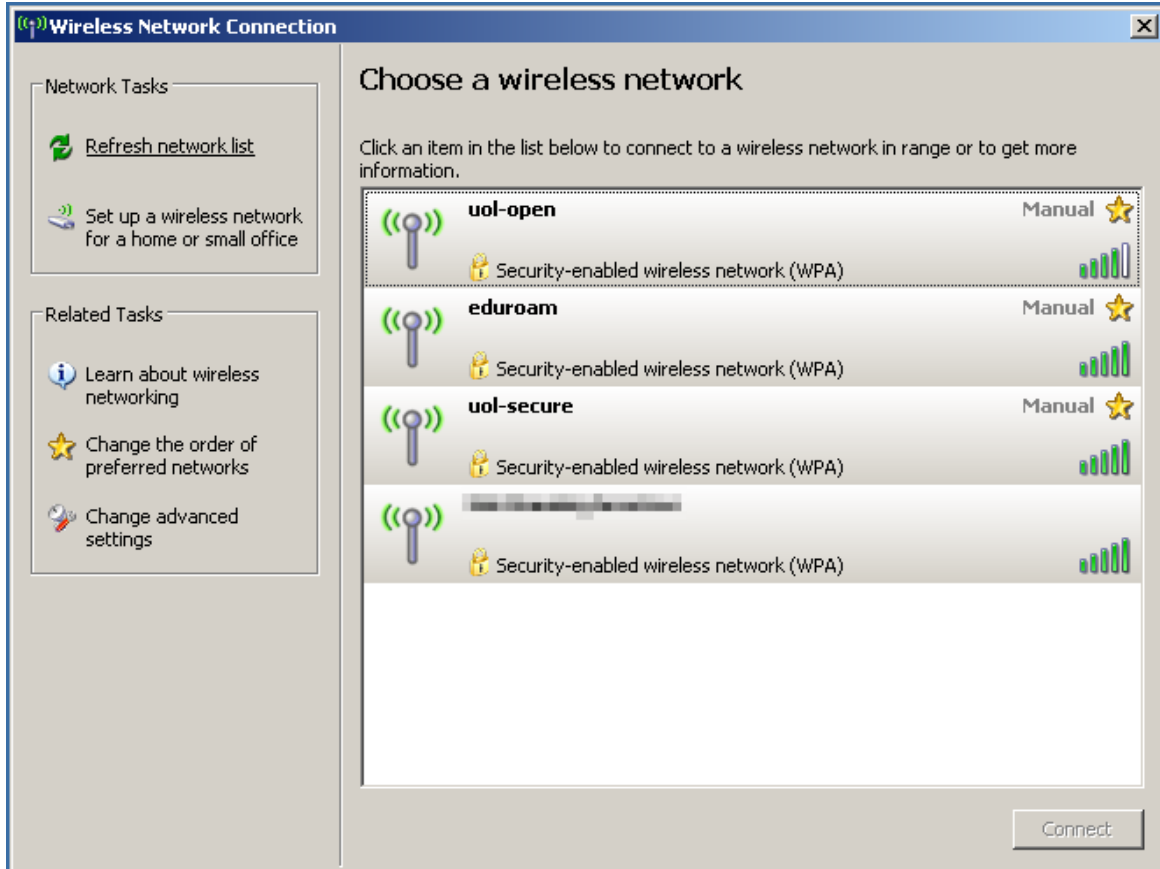
1. Select the wireless network icon in the system tray (bottom right hand corner of the screen).



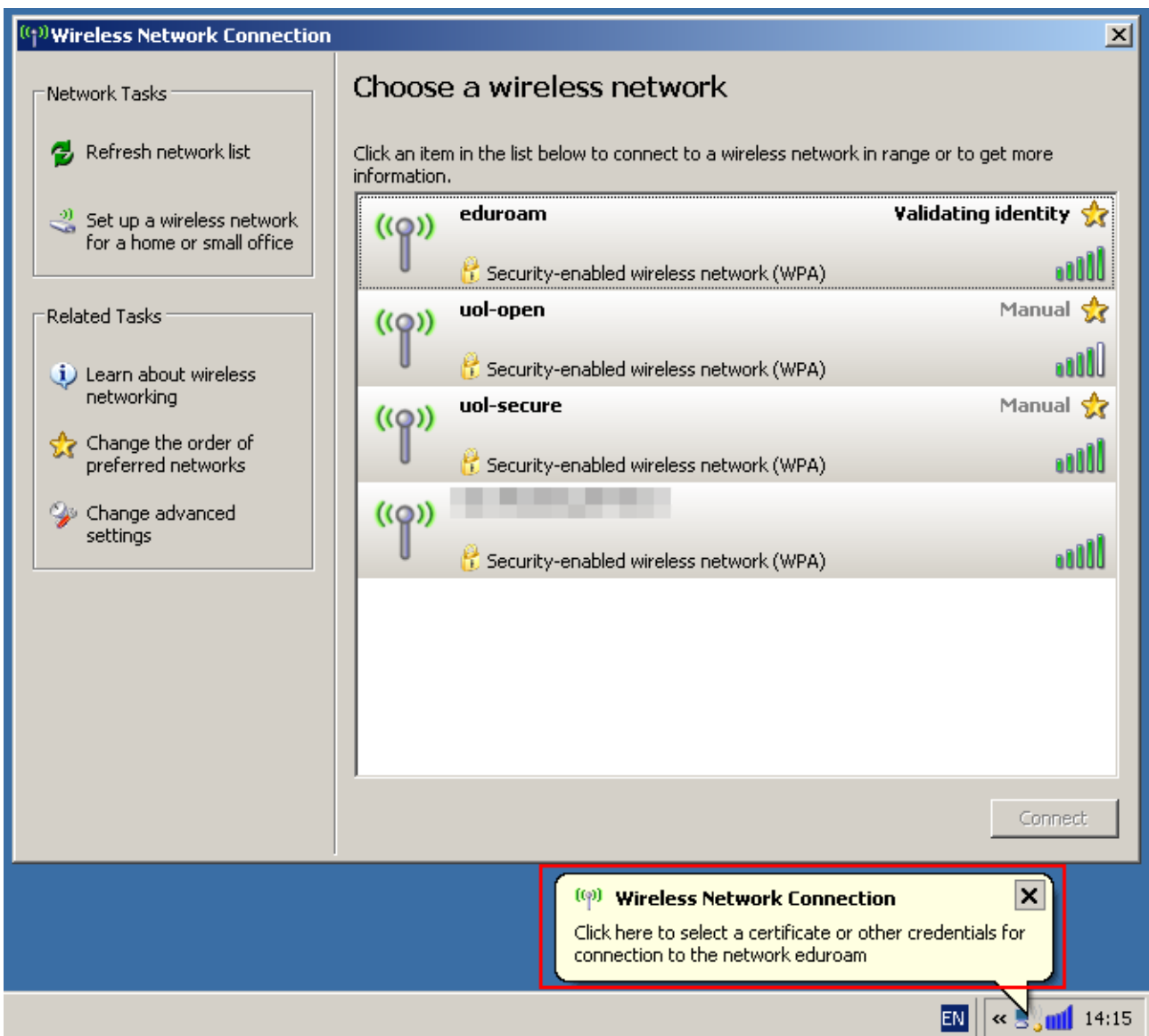
and right click on it. Select **View Available Wireless Networks**.



2. When the list of wireless networks comes up, select the wireless network labelled **eduroam**.



3. This should cause to speech balloon to pop-up from the system tray.



What may not be immediately obvious is you have to click on the speech balloon to bring up the login dialogue box.

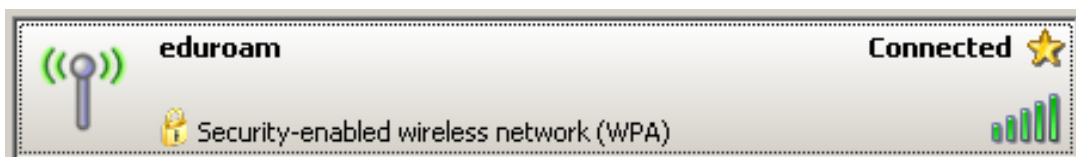
4. Windows will now open a new dialogue box asking for your user name and password.



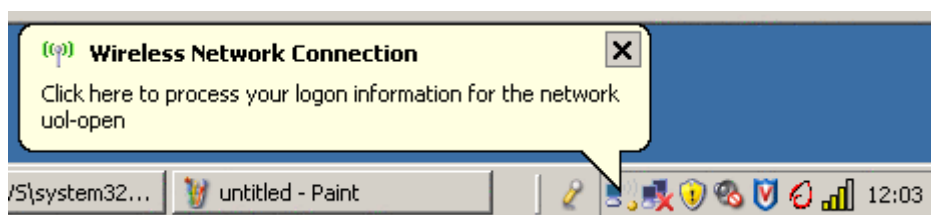
For users in the UNIVERSE Windows Domain :

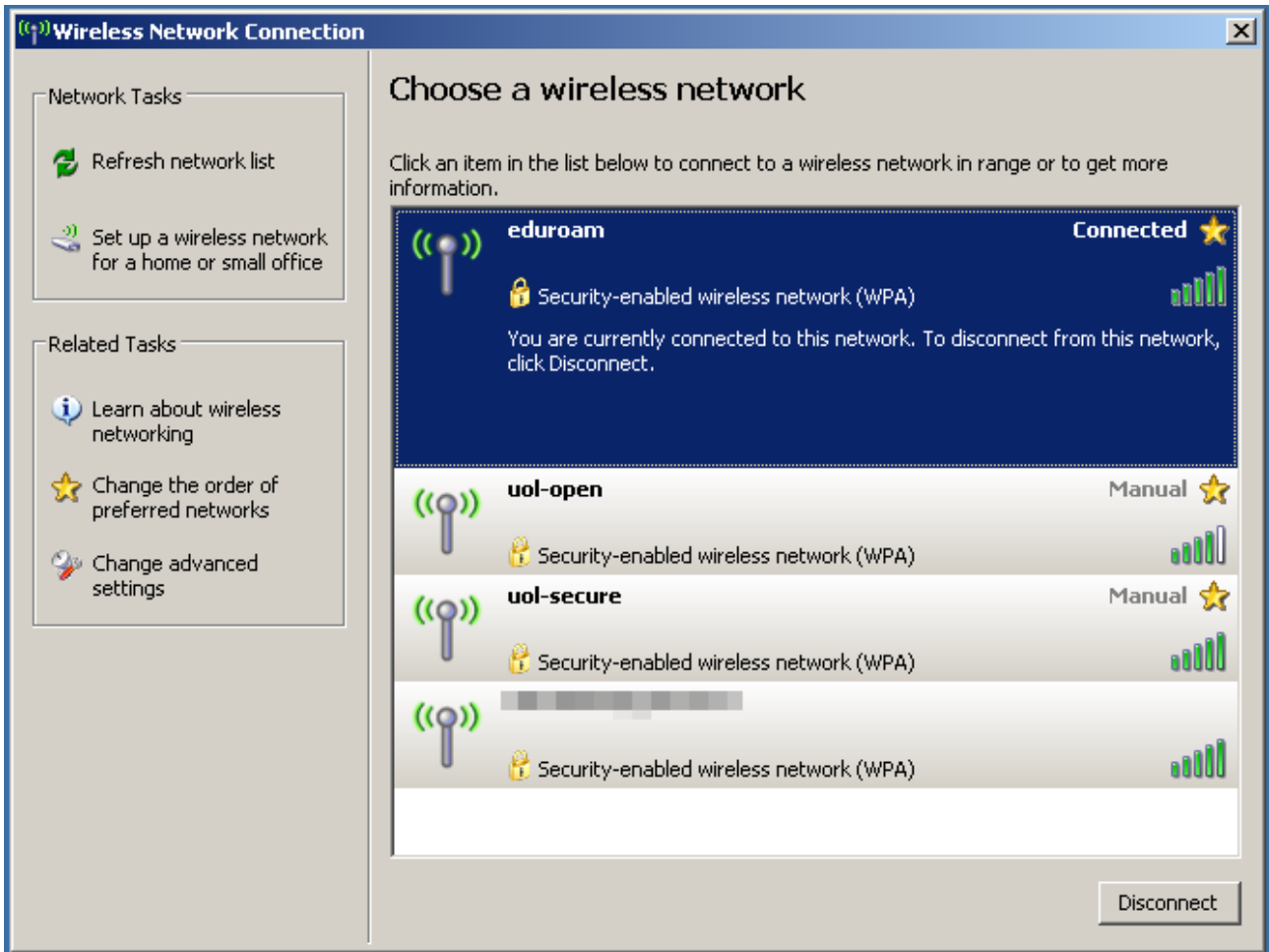
- For User Name, enter your UNIVERSE username followed by @london.ac.uk, for example, joe.bloggs@london.ac.uk.
- For Password, enter your UNIVERSE password.
- Do *not* enter anything in the the Logon domain box.

If the your login is successful, then the entry in the wireless network list for **eduroam** should change to **Connected**.



5. If your login was unsuccessful, then a balloon will pop up asking you to try and enter the details again.





At this point, you can either click on the balloon which will open the logon dialogue again, or disconnect from the wireless network and try again.

## ***DISCONNECTING FROM THE WIRELESS NETWORK***

To disconnect from the wireless network manually, open the wireless network list, select the uol-open entry and press the Disconnect button.

Alternatively, you will be disconnected from the wireless network when you shut your machine down.